

CPU
Allwinner A20
ARM Cortex-A7
Dual-Core
1000MHz

Memory
DDR3
512/1024MBytes

NAND Flash
memory
4 GBytes

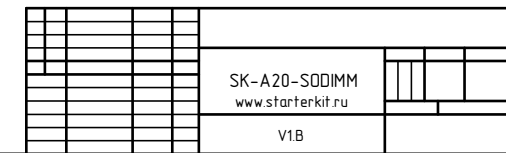
Ethernet PHY
1000/100/10M

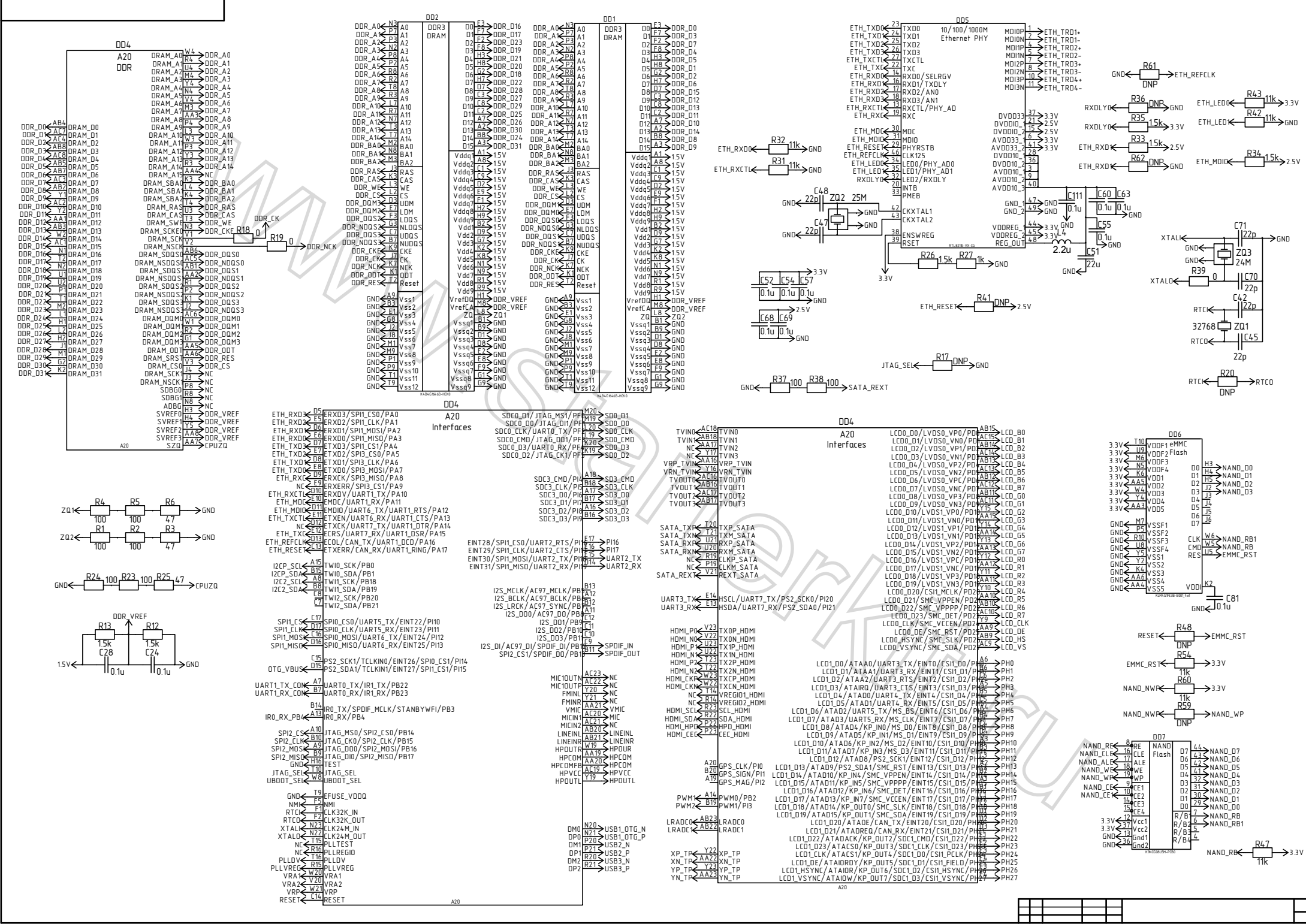
Power system

3 x USB
SATA
HDMI
TVOUT
Audio OUT/IN
Touchscreen
Ethernet RX/TX
2 x SD/MMC
LCD
2 x LVDS
CSI
i2S
3 x UART
2 x SPI
2 x I2C
1 x CAN
PWM
EMI

X1					
SD3_D1	41	SD2_D1	I2C1_SDA	42	HDMI_SDA
SD3_D2	43	SD2_D2	I2C1_SCL	44	HDMI_SCL
SD3_D3	45	SD2_D3	I2C2_SDA	46	HDMI_SDA
GND	47	GND	I2C2_SCL	48	I2C2_SCL
SPDIF_OUT	49	RESERVED	PWM2	50	PWM2
SPDIF_IN	51	RESERVED	PWM1	52	PWM1
HDMI_HPD	53	RESERVED	GND	54	GND
PWR_ON	55	RESERVED	CS1_PCK	56	CS1_PCK
PWR_DE	57	RESERVED	CS1_HS	58	CS1_HS
UBOOT_SEL	59	RESERVED	CS1_VS	60	CS1_VS
	61	RESERVED	CS1_D7	62	CS1_D7
TVIN0	63	RESERVED	CS1_D6	64	CS1_D6
GND	65	RESERVED	CS1_D5	66	CS1_D5
TVIN2	67	RESERVED	CS1_D4	68	CS1_D4
TVIN3	69	RESERVED	CS1_D3	70	CS1_D3
TVIN4	71	RESERVED	CS1_D2	72	CS1_D2
TVOUT0	73	RESERVED	CS1_D1	74	CS1_D1
TVOUT1	75	RESERVED	CS1_D0	76	CS1_D0
TVOUT2	77	RESERVED	I2S_TXFS	78	CS1_D0
TVOUT3	79	RESERVED	I2S_RXD	80	CS1_MCLK
TVOUT4	81	RESERVED	I2S_TXD	82	PH2
LINEINR	83	RESERVED	I2S_TXC	84	PH5
LINEINL	85	RESERVED	I2S_MCLK	86	PH0
VMIC	87	RESERVED	GND	88	GND
GND	89	GND	GND	90	GND
SATA_TXP	91	SATA_TXN	BUS_BCLK	92	PH3
SATA_TXN	93	SATA_RXN	BUS_CS1	94	PH1
SATA_RXN	95	SATA_RXP	BUS_CS0	96	PH4
SATA_RXP	97	SATA_RXP	BUS_DE	98	PH6
GND	99	GND	BUS_WAIT	100	PH7
HDMI_CKN	101	HDMI_CKN	BUS_RW	102	PH10
HDMI_CKP	103	HDMI_CKP	BUS_LBA	104	PH13
HDMI_ND	105	HDMI_PD	BUS_EB1	106	PH15
HDMI_PD	107	HDMI_PD	BUS_EB0	108	PH11
HDMI_N1	109	HDMI_P1	BUS_DA15	110	PH14
HDMI_P1	111	HDMI_P1	BUS_DA14	112	PH16
HDMI_N2	113	HDMI_P2	BUS_DA13	114	PH8
HDMI_P2	115	HDMI_P2	BUS_DA12	116	PH17
GND	117	GND	BUS_DA11	118	PH19
MIC	119	LVDS_0_TXN	BUS_DA10	120	PH22
HPCOM	121	LVDS_0_TXP	BUS_DA9	122	PH18
HPOUTL	123	LVDS_1_TXN	BUS_DA8	124	PH12
HPOUR	125	LVDS_1_TXP	BUS_DA7	126	PH20
XP_TP	127	LVDS_2_TXN	BUS_DA6	128	PH23
YN_TP	129	LVDS_2_TXP	BUS_DA5	130	PH21
YP_TP	131	LVDS_CLIN	BUS_DA4	132	PH26
YN_TP	133	LVDS_CLNP	BUS_DA3	134	PH24
LRADC1	135	LVDS_3_TXN	BUS_DA2	136	PH27
LRADC0	137	LVDS_3_TXP	BUS_DA1	138	PH25
GND	139	GND	BUS_DA0	140	PH9
141	USB_N	GND	GND	142	GND
143	USB_P	LCD_DE	LCD_DE	144	LCD_DE
145	USB_N	LCD_VS	LCD_VS	146	LCD_VS
147	USB_P	LCD_HS	LCD_HS	148	LCD_HS
149	USB_N	LCD_B7	LCD_B7	150	LCD_B7
151	USB_P	LCD_B6	LCD_B6	152	LCD_B6
153	USB_OTG_N	LCD_B5	LCD_B5	154	LCD_B5
155	USB_OTG_P	LCD_B4	LCD_B4	156	LCD_B4
157	USB_OTG_VBUS	LCD_B3	LCD_B3	158	LCD_B3
159	3.3V_OUT	LCD_B2	LCD_B2	160	LCD_B2
161	ETH_LED1	LCD_B1	LCD_B1	162	LCD_B1
163	ETH_LED2	LCD_B0	LCD_B0	164	LCD_B0
165	ETH_LED3	LCD_G7	LCD_G7	166	LCD_G7
167	ETH_LED4	LCD_G6	LCD_G6	168	LCD_G6
169	ETH_LED5	LCD_G5	LCD_G5	170	LCD_G5
171	ETH_LED6	LCD_G4	LCD_G4	172	LCD_G4
173	ETH_LED7	LCD_G3	LCD_G3	174	LCD_G3
175	ETH_LED8	LCD_G2	LCD_G2	176	LCD_G2
177	ETH_LED9	LCD_G1	LCD_G1	178	LCD_G1
179	ETH_LED10	LCD_G0	LCD_G0	180	LCD_G0
181	ETH_LED11	LCD_R7	LCD_R7	182	LCD_R7
183	ETH_LED12	LCD_R6	LCD_R6	184	LCD_R6
185	GND	LCD_R5	LCD_R5	186	LCD_R5
187	POE_TXP	LCD_R4	LCD_R4	188	LCD_R4
189	POE_TXN	LCD_R3	LCD_R3	190	LCD_R3
191	POE_RXP	LCD_R2	LCD_R2	192	LCD_R2
193	POE_RXN	LCD_R1	LCD_R1	194	LCD_R1
195	POE_REFP	LCD_R0	LCD_R0	196	LCD_R0
197	POE_REFN	LCD_CLK	LCD_CLK	198	LCD_CLK
199	GND	GND	GND	200	GND
3.3V	3.3V_OUT	GND	GND		

X1					
5V	1	5V	2	5V	
5V	3	5V	4	5V	
5V	5	5V	6	5V	
5V	7	5V	8	5V	
GND	9	GND	10	GND	
SPI2_CLK	11	SPI2_GLK	SPI2_CLK	12	SPI1_CLK
SPI2_CS	13	SPI2_CS0	SPI2_CS	14	SPI1_CS
SPI2_MOSI	15	SPI2_MOSI	SPI2_MOSI	16	SPI1_MOSI
SPI2_MISO	17	SPI2_MISO	SPI2_MISO	18	SPI1_MISO
RESET	19	RESET	JUART1_TX	20	JUART1_TX_CON
VBAT	21	VBAT	JUART1_RX	22	JUART1_RX_CON
SD0_D0	23	SD0_D0	JUART2_TX	24	JUART2_TX
SD0_D1	25	SD0_D1	JUART2_RX	26	JUART2_RX
SD0_D2	27	SD0_D2	JUART3_TX	28	JUART3_TX
SD0_D3	29	SD0_D3	JUART3_RX	30	JUART3_RX
SD0_CMD	31	SD0_CMD	JUART4_TX	32	JUART4_TX
SD0_CLK	33	SD0_CLK	JUART4_RX	34	JUART4_RX
3.3V	35	3.3V_OUT	CANL_TX	36	PH16
SD3_CLK	37	SD3_CLK	CANL_RX	38	PH17
SD3_CMD	39	SD3_CMD	CAN2_TX	40	HDMI_CEC
SD3_RX	41	SD3_RX	CAN2_RX	42	PH17





D02		D01		D05	
DDR_A0	P1 A0	DDR_A0	P1 A0	ETH_TXD0	23 TXD0
DDR_A1	P1 A1	DDR_A1	P1 A1	ETH_TXD1	24 TXD1
DDR_A2	P1 A2	DDR_A2	P1 A2	ETH_TXD2	25 TXD2
DDR_A3	P1 A3	DDR_A3	P1 A3	ETH_TXD3	26 TXD3
DDR_A4	P1 A4	DDR_A4	P1 A4	ETH_TXD4	27 TXD4
DDR_A5	P1 A5	DDR_A5	P1 A5	ETH_TXD5	28 TXD5
DDR_A6	P1 A6	DDR_A6	P1 A6	ETH_TXD6	29 TXD6
DDR_A7	P1 A7	DDR_A7	P1 A7	ETH_TXD7	30 TXD7
DDR_A8	P1 A8	DDR_A8	P1 A8	ETH_TXD8	31 TXD8
DDR_A9	P1 A9	DDR_A9	P1 A9	ETH_TXD9	32 TXD9
DDR_A10	P1 A10	DDR_A10	P1 A10	ETH_TXD10	33 TXD10
DDR_A11	P1 A11	DDR_A11	P1 A11	ETH_TXD11	34 TXD11
DDR_A12	P1 A12	DDR_A12	P1 A12	ETH_TXD12	35 TXD12
DDR_A13	P1 A13	DDR_A13	P1 A13	ETH_TXD13	36 TXD13
DDR_A14	P1 A14	DDR_A14	P1 A14	ETH_TXD14	37 TXD14
DDR_A15	P1 A15	DDR_A15	P1 A15	ETH_TXD15	38 TXD15
DDR_A16	P1 A16	DDR_A16	P1 A16	ETH_TXD16	39 TXD16
DDR_A17	P1 A17	DDR_A17	P1 A17	ETH_TXD17	40 TXD17
DDR_A18	P1 A18	DDR_A18	P1 A18	ETH_TXD18	41 TXD18
DDR_A19	P1 A19	DDR_A19	P1 A19	ETH_TXD19	42 TXD19
DDR_A20	P1 A20	DDR_A20	P1 A20	ETH_TXD20	43 TXD20
DDR_A21	P1 A21	DDR_A21	P1 A21	ETH_TXD21	44 TXD21
DDR_A22	P1 A22	DDR_A22	P1 A22	ETH_TXD22	45 TXD22
DDR_A23	P1 A23	DDR_A23	P1 A23	ETH_TXD23	46 TXD23
DDR_A24	P1 A24	DDR_A24	P1 A24	ETH_TXD24	47 TXD24
DDR_A25	P1 A25	DDR_A25	P1 A25	ETH_TXD25	48 TXD25
DDR_A26	P1 A26	DDR_A26	P1 A26	ETH_TXD26	49 TXD26
DDR_A27	P1 A27	DDR_A27	P1 A27	ETH_TXD27	50 TXD27
DDR_A28	P1 A28	DDR_A28	P1 A28	ETH_TXD28	51 TXD28
DDR_A29	P1 A29	DDR_A29	P1 A29	ETH_TXD29	52 TXD29
DDR_A30	P1 A30	DDR_A30	P1 A30	ETH_TXD30	53 TXD30
DDR_A31	P1 A31	DDR_A31	P1 A31	ETH_TXD31	54 TXD31
DDR_A32	P1 A32	DDR_A32	P1 A32	ETH_TXD32	55 TXD32
DDR_A33	P1 A33	DDR_A33	P1 A33	ETH_TXD33	56 TXD33
DDR_A34	P1 A34	DDR_A34	P1 A34	ETH_TXD34	57 TXD34
DDR_A35	P1 A35	DDR_A35	P1 A35	ETH_TXD35	58 TXD35
DDR_A36	P1 A36	DDR_A36	P1 A36	ETH_TXD36	59 TXD36
DDR_A37	P1 A37	DDR_A37	P1 A37	ETH_TXD37	60 TXD37
DDR_A38	P1 A38	DDR_A38	P1 A38	ETH_TXD38	61 TXD38
DDR_A39	P1 A39	DDR_A39	P1 A39	ETH_TXD39	62 TXD39
DDR_A40	P1 A40	DDR_A40	P1 A40	ETH_TXD40	63 TXD40
DDR_A41	P1 A41	DDR_A41	P1 A41	ETH_TXD41	64 TXD41
DDR_A42	P1 A42	DDR_A42	P1 A42	ETH_TXD42	65 TXD42
DDR_A43	P1 A43	DDR_A43	P1 A43	ETH_TXD43	66 TXD43
DDR_A44	P1 A44	DDR_A44	P1 A44	ETH_TXD44	67 TXD44
DDR_A45	P1 A45	DDR_A45	P1 A45	ETH_TXD45	68 TXD45
DDR_A46	P1 A46	DDR_A46	P1 A46	ETH_TXD46	69 TXD46
DDR_A47	P1 A47	DDR_A47	P1 A47	ETH_TXD47	70 TXD47
DDR_A48	P1 A48	DDR_A48	P1 A48	ETH_TXD48	71 TXD48
DDR_A49	P1 A49	DDR_A49	P1 A49	ETH_TXD49	72 TXD49
DDR_A50	P1 A50	DDR_A50	P1 A50	ETH_TXD50	73 TXD50
DDR_A51	P1 A51	DDR_A51	P1 A51	ETH_TXD51	74 TXD51
DDR_A52	P1 A52	DDR_A52	P1 A52	ETH_TXD52	75 TXD52
DDR_A53	P1 A53	DDR_A53	P1 A53	ETH_TXD53	76 TXD53
DDR_A54	P1 A54	DDR_A54	P1 A54	ETH_TXD54	77 TXD54
DDR_A55	P1 A55	DDR_A55	P1 A55	ETH_TXD55	78 TXD55
DDR_A56	P1 A56	DDR_A56	P1 A56	ETH_TXD56	79 TXD56
DDR_A57	P1 A57	DDR_A57	P1 A57	ETH_TXD57	80 TXD57
DDR_A58	P1 A58	DDR_A58	P1 A58	ETH_TXD58	81 TXD58
DDR_A59	P1 A59	DDR_A59	P1 A59	ETH_TXD59	82 TXD59
DDR_A60	P1 A60	DDR_A60	P1 A60	ETH_TXD60	83 TXD60
DDR_A61	P1 A61	DDR_A61	P1 A61	ETH_TXD61	84 TXD61
DDR_A62	P1 A62	DDR_A62	P1 A62	ETH_TXD62	85 TXD62
DDR_A63	P1 A63	DDR_A63	P1 A63	ETH_TXD63	86 TXD63
DDR_A64	P1 A64	DDR_A64	P1 A64	ETH_TXD64	87 TXD64
DDR_A65	P1 A65	DDR_A65	P1 A65	ETH_TXD65	88 TXD65
DDR_A66	P1 A66	DDR_A66	P1 A66	ETH_TXD66	89 TXD66
DDR_A67	P1 A67	DDR_A67	P1 A67	ETH_TXD67	90 TXD67
DDR_A68	P1 A68	DDR_A68	P1 A68	ETH_TXD68	91 TXD68
DDR_A69	P1 A69	DDR_A69	P1 A69	ETH_TXD69	92 TXD69
DDR_A70	P1 A70	DDR_A70	P1 A70	ETH_TXD70	93 TXD70
DDR_A71	P1 A71	DDR_A71	P1 A71	ETH_TXD71	94 TXD71
DDR_A72	P1 A72	DDR_A72	P1 A72	ETH_TXD72	95 TXD72
DDR_A73	P1 A73	DDR_A73	P1 A73	ETH_TXD73	96 TXD73
DDR_A74	P1 A74	DDR_A74	P1 A74	ETH_TXD74	97 TXD74
DDR_A75	P1 A75	DDR_A75	P1 A75	ETH_TXD75	98 TXD75
DDR_A76	P1 A76	DDR_A76	P1 A76	ETH_TXD76	99 TXD76
DDR_A77	P1 A77	DDR_A77	P1 A77	ETH_TXD77	100 TXD77
DDR_A78	P1 A78	DDR_A78	P1 A78	ETH_TXD78	101 TXD78
DDR_A79	P1 A79	DDR_A79	P1 A79	ETH_TXD79	102 TXD79
DDR_A80	P1 A80	DDR_A80	P1 A80	ETH_TXD80	103 TXD80
DDR_A81	P1 A81	DDR_A81	P1 A81	ETH_TXD81	104 TXD81
DDR_A82	P1 A82	DDR_A82	P1 A82	ETH_TXD82	105 TXD82
DDR_A83	P1 A83	DDR_A83	P1 A83	ETH_TXD83	106 TXD83
DDR_A84	P1 A84	DDR_A84	P1 A84	ETH_TXD84	107 TXD84
DDR_A85	P1 A85	DDR_A85	P1 A85	ETH_TXD85	108 TXD85
DDR_A86	P1 A86	DDR_A86	P1 A86	ETH_TXD86	109 TXD86
DDR_A87	P1 A87	DDR_A87	P1 A87	ETH_TXD87	110 TXD87
DDR_A88	P1 A88	DDR_A88	P1 A88	ETH_TXD88	111 TXD88
DDR_A89	P1 A89	DDR_A89	P1 A89	ETH_TXD89	112 TXD89
DDR_A90	P1 A90	DDR_A90	P1 A90	ETH_TXD90	113 TXD90
DDR_A91	P1 A91	DDR_A91	P1 A91	ETH_TXD91	114 TXD91
DDR_A92	P1 A92	DDR_A92	P1 A92	ETH_TXD92	115 TXD92
DDR_A93	P1 A93	DDR_A93	P1 A93	ETH_TXD93	116 TXD93
DDR_A94	P1 A94	DDR_A94	P1 A94	ETH_TXD94	117 TXD94
DDR_A95	P1 A95	DDR_A95	P1 A95	ETH_TXD95	118 TXD95
DDR_A96	P1 A96	DDR_A96	P1 A96	ETH_TXD96	119 TXD96
DDR_A97	P1 A97	DDR_A97	P1 A97	ETH_TXD97	120 TXD97
DDR_A98	P1 A98	DDR_A98	P1 A98	ETH_TXD98	121 TXD98
DDR_A99	P1 A99	DDR_A99	P1 A99	ETH_TXD99	122 TXD99
DDR_A100	P1 A100	DDR_A100	P1 A100	ETH_TXD100	123 TXD100

A20		A20		A20	
ETH_RXD0	P0 PA0	SDIO_D1/JTAG_MST/PF	M20 S00_D1	LCDD_00/LVDS0_VP0/PD	AB15 LCO_80
ETH_RXD1	P0 PA1	SDIO_D0/JTAG_D1/PF	M19 S00_D0	LCDD_01/LVDS0_VN0/PD	AB16 LCO_81
ETH_RXD2	P0 PA2	SDIO_CLK/UART0_TX/PF	M20 S00_CLK	LCDD_02/LVDS0_VP1/PD	AB17 LCO_82
ETH_RXD3	P0 PA3	SDIO_CMD/JTAG_D0/PF	M19 S00_CMD	LCDD_03/LVDS0_VN1/PD	AB18 LCO_83
ETH_RXD4	P0 PA4	SDIO_D2/JTAG_CK1/PF	M19 S00_D2	LCDD_04/LVDS0_VP2/PD	AB19 LCO_84
ETH_RXD5	P0 PA5			LCDD_05/LVDS0_VN2/PD	AB20 LCO_85
ETH_RXD6	P0 PA6			LCDD_06/LVDS0_VP3/PD	AB21 LCO_86
ETH_RXD7	P0 PA7			LCDD_07/LVDS0_VN3/PD	AB22 LCO_87
ETH_RXD8	P0 PA8			LCDD_08/LVDS0_VP4/PD	AB23 LCO_88
ETH_RXD9	P0 PA9			LCDD_09/LVDS0_VN4/PD	AB24 LCO_89
ETH_RXD10	P0 PA10			LCDD_10/LVDS1_VP0/PD	AA15 LCO_90
ETH_RXD11	P0 PA11			LCDD_11/LVDS1_VN0/PD	AA16 LCO_91
ETH_RXD12	P0 PA12			LCDD_12/LVDS1_VP1/PD	AA17 LCO_92
ETH_RXD13	P0 PA13			LCDD_13/LVDS1_VN1/PD	AA18 LCO_93
ETH_RXD14	P0 PA14			LCDD_14/LVDS1_VP2/PD	AA19 LCO_94
ETH_RXD15	P0 PA15			LCDD_15/LVDS1_VN2/PD	AA20 LCO_95
ETH_RXD16	P0 PA16			LCDD_16/LVDS1_VP3/PD	AA21 LCO_96
ETH_RXD17	P0 PA17			LCDD_17/LVDS1_VN3/PD	AA22 LCO_97
ETH_RXD18	P0 PA18			LCDD_18/LVDS1_VP4/PD	AA23 LCO_98
ETH_RXD19	P0 PA19			LCDD_19/LVDS1_VN4/PD	AA24 LCO_99
ETH_RXD20	P0 PA20			LCDD_20/CSI1_MCLK/PD	AA25 LCO_100
ETH_RXD21	P0 PA21			LCDD_21/SMC_VPPNP/PD	AA26 LCO_101
ETH_RXD22	P0 PA22			LCDD_22/SMC_VCCEN/PD	AA27 LCO_102
ETH_RXD23	P0 PA23			LCDD_23/SMC_DET/PD	AA28 LCO_103
ETH_RXD24	P0 PA24			LCDD_24/SMC_VCCEN/PD	AA29 LCO_104
ETH_RXD25	P0 PA25			LCDD_25/SMC_RST/PD	AA30 LCO_105
ETH_RXD26	P0 PA26			LCDD_26/SMC_SLK/PD	AA31 LCO_106
ETH_RXD27	P0 PA27			LCDD_27/SMC_SDA/PD	AA32 LCO_107
ETH_RXD28	P0 PA28			LCDD_28/SMC_SCL/PD	AA33 LCO_108
ETH_RXD29	P0 PA29			LCDD_29/SMC_VCCEN/PD	AA34 LCO_109
ETH_RXD30	P0 PA30			LCDD_30/ATAA0/UART3_TX/EINT0/CSI1_D0/P	PH0 LCO1_00
ETH_RXD31	P0 PA31			LCDD_31/ATAA1/UART3_RX/EINT1/CSI1_D1/P	PH1 LCO1_01
ETH_RXD32	P0 PA32			LCDD_32/ATAA2/UART3_RTS/EINT2/CSI1_D2/P	PH2 LCO1_02
ETH_RXD33	P0 PA33			LCDD_33/ATAA3/UART3_CTS/EINT3/CSI1_D3/P	PH3 LCO1_03
ETH_RXD34	P0 PA34			LCDD_34/ATAA4/UART4_TX/EINT4/CSI1_D4/P	PH4 LCO1_04
ETH_RXD35	P0 PA35			LCDD_35/ATAA5/UART4_RX/EINT5/CSI1_D5/P	PH5 LCO1_05
ETH_RXD36	P0 PA36			LCDD_36/ATAA6/UART5_TX/MS_BS/EINT6/CSI1_D6/P	PH6 LCO1_06
ETH_RXD37	P0 PA37			LCDD_37/ATAA7/UART5_RX/MS_CLK/EINT7/CSI1_D7/P	PH7 LCO1_07
ETH_RXD38	P0 PA38			LCDD_38/ATAA8/KP_IN4/SMC_VPPNP/EINT8/CSI1_D8/P	PH8 LCO1_08
ETH_RXD39	P0 PA39			LCDD_39/ATAA9/KP_IN5/MS_D0/EINT9/CSI1_D9/P	PH9 LCO1_09
ETH_RXD40	P0 PA40			LCDD_40/ATAA10/KP_IN6/SMC_DET/EINT10/CSI1_D10/P	PH10 LCO1_10
ETH_RXD41	P0 PA41			LCDD_41/ATAA11/KP_IN7/SMC_VCCEN/EINT11/CSI1_D11/P	PH11 LCO1_11
ETH_RXD42	P0 PA42			LCDD_42/ATAA12/KP_OUT3/SMC_SLK/EINT18/CSI1_D18/P	PH18 LCO1_18
ETH_RXD43	P0 PA43			LCDD_43/ATAA13/KP_OUT4/SMC_SLK/EINT19/CSI1_D19/P	PH19 LCO1_19
ETH_RXD44	P0 PA44			LCDD_44/ATAA14/CAN_TX/EINT20/CSI1_D20/P	PH20 LCO1_20
ETH_RXD45	P0 PA45			LCDD_45/ATAA15/CAN_RX/EINT21/CSI1_D21/P	PH21 LCO1_21
ETH_RXD46	P0 PA46			LCDD_46/ATAA16/KP_OUT2/SMC_DET/EINT12/CSI1_D12/P	PH12 LCO1_12
ETH_RXD47	P0 PA47			LCDD_47/ATAA17/KP_OUT3/SMC_SLK/CSI1_D23/P	PH23 LCO1_23
ETH_RXD48	P0 PA48			LCDD_48/ATAA18/KP_OUT4/SMC_SLK/CSI1_D24/P	PH24 LCO1_24
ETH_RXD49	P0 PA49			LCDD_49/ATAA19/KP_OUT5/SMC_SLK/CSI1_D25/P	PH25 LCO1_25
ETH_RXD50	P0 PA50			LCDD_50/ATAA20/KP_OUT6/SMC_SLK/CSI1_VSYNC/P	PH26 LCO1_26
ETH_RXD51	P0 PA51			LCDD_51/ATAA21/KP_OUT7/SMC_SLK/CSI1_VSYNC/P	PH27 LCO1_27

A20		A20		A20	
ETH_RXD52	P0 PA52	ETH_TXD0	P1 PA0	ETH_TXD0	P1 PA0
ETH_RXD53	P0 PA53	ETH_TXD1	P1 PA1	ETH_TXD1	P1 PA1
ETH_RXD54	P0 PA54	ETH_TXD2	P1 PA2	ETH_TXD2	P1 PA2
ETH_RXD55	P0 PA55	ETH_TXD3	P1 PA3	ETH_TXD3	P1 PA3
ETH_RXD56	P0 PA56	ETH_TXD4	P1 PA4	ETH_TXD4	P1 PA4
ETH_RXD57	P0 PA57	ETH_TXD5	P1 PA5	ETH_TXD5	P1 PA5
ETH_RXD58	P0 PA58	ETH_TXD6	P1 PA6	ETH_TXD6	P1 PA6
ETH_RXD59	P0 PA59	ETH_TXD7	P1 PA7	ETH_TXD7	P1 PA7
ETH_RXD60	P0 PA60	ETH_TXD8	P1 PA8	ETH_TXD8	P1 PA8
ETH_RXD61	P0 PA61	ETH_TXD9	P1 PA9	ETH_TXD9	P1 PA9
ETH_RXD62	P0 PA62	ETH_TXD10	P1 PA10	ETH_TXD10	P1 PA10
ETH_RXD63	P0 PA63	ETH_TXD11	P1 PA11	ETH_TXD11	P1 PA11
ETH_RXD64	P0 PA64	ETH_TXD12	P1 PA12	ETH_TXD12	P1 PA12
ETH_RXD65	P0 PA65	ETH_TXD13	P1 PA13	ETH_TXD13	P1 PA13
ETH_RXD66	P0 PA66	ETH_TXD14	P1 PA14	ETH_TXD14	P1 PA14
ETH_RXD67	P0 PA67	ETH_TXD15	P1 PA15	ETH_TXD15	P1 PA15
ETH_RXD68	P0 PA68	ETH_TXD16	P1 PA16	ETH_TXD16	P1 PA16
ETH_RXD69	P0 PA69	ETH_TXD17	P1 PA17	ETH_TXD17	P1 PA17
ETH_RXD70	P0 PA70	ETH_TXD18	P1 PA18	ETH_TXD18	P1 PA18
ETH_RXD71	P0 PA71	ETH_TXD19	P1 PA19	ETH_TXD19	P1 PA19
ETH_RXD72	P0 PA72	ETH_TXD20	P1 PA20	ETH_TXD20	P1 PA2

